

STEGO® GLOVES TECHNOLOGIES



DESCRIPTION

- 13 gauge Cut D Nomex Engineered yarn liner
- Neoprene black coating on palm and fingertips
- Hem stitched with Kevlar thread
- Seamless knit construction
- Washable
- Contoured fit
- Elasticated cuff

IDEAL APPLICATIONS

- Precision industry
- electronics,
- glass manufacturing
- aeronautics
- plastic injection/molding
- sheet metal/sharp parts handling
- oil and gas

COLOR

Yellow

SIZE

8/M • 9/L • 10/XL

PACKING

1 pair per polybag,
144 pairs per carton

STANDARDS



GLOVE CARE

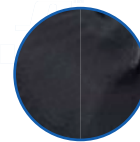
Can be washed using warm water and mild soap. Rinse with cold water and allow to air dry. Glove should be stored away from direct sunlight and humidity.



ST-5588



REINFORCED THUMB CROTCH



NITRILE SANDY



ELASTICATED CUFF

HAND PROTECTION ENGINEERED.
ACHIEVED.



www.stegosafety.com

Doc. Control:	Rev.:	Date:
	3.2	March 28, 2016

This Article Data Sheet (ADS) is designed and produced by FLOWTRONIX (FT) covered under the intellectual property law. Any reproduction in whole or in part is strictly prohibited without written approval.