

# SHELL SERIES ST-9083

HIGH IMPACT & CUT GLOVES,  
SHELL-GRD®  
SANDY NITRILE COATING

- Engineered to give superior impact and laceration protection in various working conditions
- SHELL-GRD® on fingers, knuckles and back of hand gives overall impact coverage
- Reinforced smooth nitrile thumb crotch for added durability
- Elasticated cuffs and sandy nitrile palm coated for excellent grip and fit
- Oil & Liquid penetration resistant
- Hi-viz color scheme for visual awareness

### IDEAL APPLICATIONS

- Rig drilling
- Oil & Gas Industry
- Construction
- Demolition
- Logistics & Material handling
- Mining
- Mechanical
- Power tool usage

### COLOR

Hi-viz Green+Red+Blue

### SIZE

7/S • 8/M • 9/L • 10/XL • 11/2XL • 12/3XL • 13/4XL

### PACKING

1 pair per polybag,  
60 pairs per carton

### STANDARDS

- CE Category II
- ANSI A3 CUT
- ANSI/ISEA 138-2019
- EN 388 (4X43CP)
- EN 407 (X2XXXX)

### GLOVE CARE

	Machine wash cool		Line dry
	Do not bleach		Do not iron
	Tumble dry low		



Certified to the  
NEW ANSI 2016 Standards

--	--	--	--	--

### KEY FEATURES


HAND PROTECTION ENGINEERED.  
ACHIEVED.



www.stegosafety.com

Doc. Control:	Rev.: 3.2	Date: March 28, 2016
---------------	-----------	----------------------

This Article Data Sheet (ADS) is designed and produced by FLOWTRONIX (FT) covered under the intellectual property law. Any reproduction in whole or in part is strictly prohibited without written approval. FT HG 5160-3.2

IMPACT & CUT PROTECTION



# SHELL SERIES ST-9083



Hi-viz ID badge

Side gusset

Padded cuff for secure fit

Water repellent finish

High Performance leather reinforcement palm

Strong Kevlar double stitching pattern

High performance leather thumb crotch

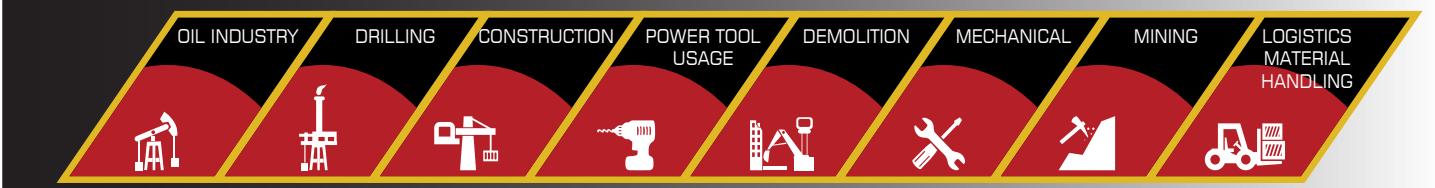
SHELL GRD on back

SHELL GRD on fingers



IMPACT & CUT PROTECTION

### IDEAL INDUSTRIES

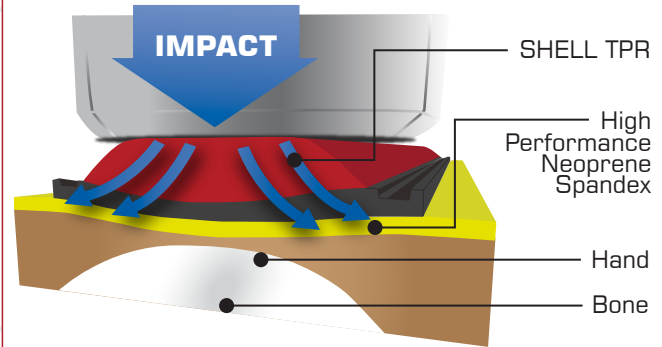


### FEATURES

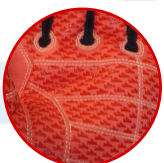
SHELL Series ST-9083 gloves is engineered with high level of protection against impact, vibration and cut hazards with optimum functionality and grip. Through multiple technologies and features, ST-9083 was built to provide the best solution for oil, gas, drilling, rigging, construction, demolition & mining industries. ST-9083 has Kevlar Double stitching pattern for increased durability.

SHELL-GRD® on the back of the hand and fingers is an advanced impact protection system that provides greater protection and dissipates forceful blows to keep the hands protected from smash and pinch injuries.

### SHELL TPR IMPACT PROTECTION



SHELL-GRD® on fingers



High performance leather reinforcement palm



Hi-viz ID badge



SHELL-GRD® on back



Side gusset



Padded cuff



Water Repellent Finish

HAND PROTECTION ENGINEERED. ACHIEVED.



Doc. Control:	Rev.:	Date:
	3.2	March 28, 2016

This Article Data Sheet (ADS) is designed and produced by FLOWTRONIX (FT) covered under the intellectual property law. Any reproduction in whole or in part is strictly prohibited without written approval. FT HG 5160-3.2

www.stegosafety.com