

AMBIFLEX ST-4510



DESCRIPTION

- * **Cut Level 5 Protection**
- * Lightweight, low-linting HPPE fibre provides long lasting protection against cut, tear and abrasion
- * Excellent flexibility and durability while maintaining optimal dexterity and tactile feel
- * Ambidextrous for practical usage
- * Longer elasticated cuffs for better protection
- * Can be used as a glove liner

IDEAL APPLICATIONS

- * Handling Sharp Objects
- * Glass Plants
- * Construction
- * Food Processing
- * Warehousing

COLOR

White • Green • Red • Blue • Yellow

SIZE

8/M • 9/L • 10/XL

PACKING

1 pair per polybag,
100 pairs per carton

STANDARDS

CAT II	EN 420	EN 388	ABRASION	CUT
CE	i		0 1 2 3 4	0 1 2 3 4 5
		3 5 4 X	TEAR	PUNCTURE
			0 1 2 3 4	X X X X X

GLOVE CARE

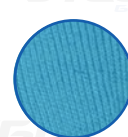
Can be washed using warm water and mild soap. Rinse with cold water and allow to air dry. Glove should be stored away from direct sunlight and humidity.



WHITE



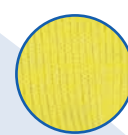
GREEN



BLUE



RED



YELLOW



HAND PROTECTION ENGINEERED.
ACHIEVED.



www.stegosafety.com

CUT PROTECTION